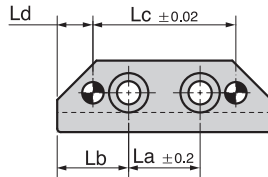


**BGLXS**



• **L=60**

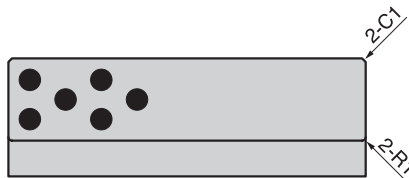
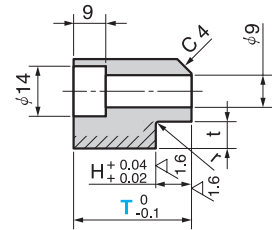
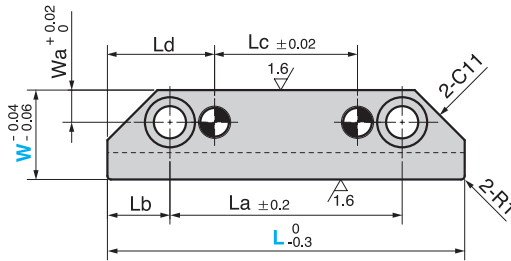


• **Dowel hole**

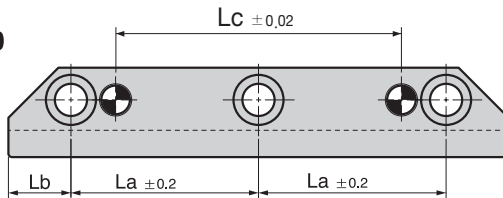
W=20  $\phi 6^{+0.012}_0$

W=25•30  $\phi 8^{+0.015}_0$

• **L=80~100**



• **L=120~200**



Material : Bronze with Graphite  
(CAC304+GR)  
Oilless Type Area  
(Hatched Area)



# Guide Rail – For Slide Core

W	L	Wa	La	Lb	Lc	Ld	T	H	t	r
20	60		20	20	40	10				
	80		50		20					
	100	9	70		40		23	8	5.5	0.5
	120		45	15	60	30	28			
	140		55		80					
160		65		100						
25	80		45		20					
	100		65		40					
	120		42.5		60		28			
	140	9	52.5	17.5	80	30	33	10	7.5	0.8
	160		62.5		100		43			
30	180		72.5		120					
	200		82.5		140					
	100		60		20					
	120		40		40					
	140	11	50	20	60	40	43	15	11	0.8
160	60		80		53					
180		70		100						
200		80		120						

Catalog No.	W	L	T
	20	60	
		80	
		100	23
		120	28
		140	
	25	160	
		80	
		100	
		120	28
		140	33
BGLXS	25	160	43
		180	
		200	
		100	
		120	
	30	140	43
		160	53
		180	
		200	



Order

Catalog No.

BGLXS

W

20

L

100

T

28