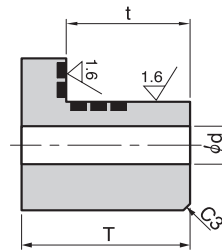
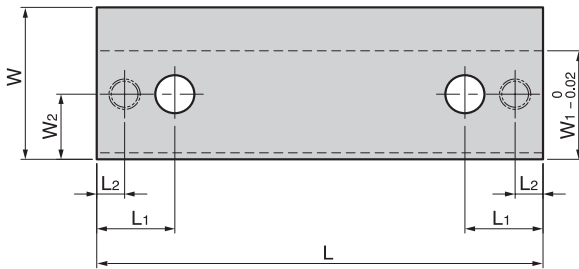


**BVSOL**

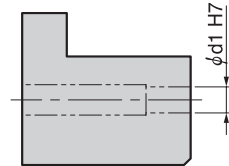
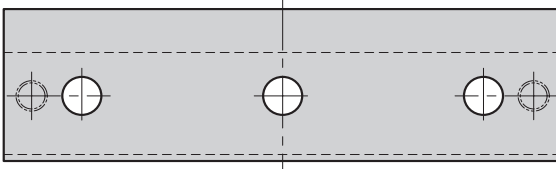


• For  $L \leq 200$



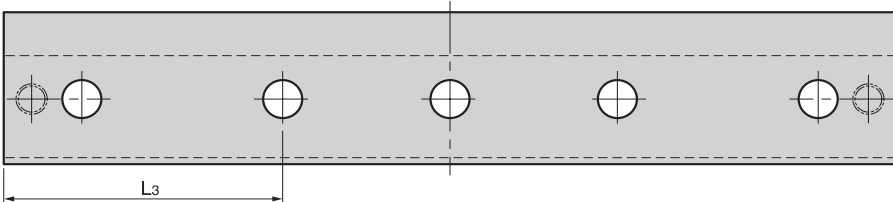
T and t have the adjusting allowance of 0.5 mm.

• For  $L \leq 250$



Dowel pin hole ( $\phi d_1$ ) is not machined.

• For  $L \leq 400$



• Sliding Direction



Material : Bronze with Graphite (CAC304+GR)

Catalog No.	W	L	W <sub>1</sub>	W <sub>2</sub>	L <sub>1</sub>	L <sub>2</sub>	L <sub>3</sub>	T	t	d	d <sub>1</sub>
BVSOL-01	25	125	18	9				15.5	8.5	9	6
BVSOL-02		160									
BVSOL-03	32	125	22	11	27.5	10		30.5	15.5	11	8
BVSOL-04		160									
BVSOL-05		200									
BVSOL-06	55	100	37	20			-	55.5	39.5	13.5	10
BVSOL-07		160									
BVSOL-11	70	160	50	30	35	12.5		75.5	55.5	17.5	12
BVSOL-12		200									
BVSOL-13		250									
BVSOL-15		400					125				
BVSOL-16		160									
BVSOL-17	85	200	63	38	42.5	15	-	90.5	65.5	22	16
BVSOL-18		250									
BVSOL-20		400									



Order

Catalog No.

**BVSOL-12**

■ Recommended Mounting Bolt and Dowel Pin

Catalog No.	W	L	Recommended Mounting Bolt DIN 912	Recommended Dowel Pin DIN7979
BVSOL-01	25	125	M8 × 30	φ6 × 20
BVSOL-02		160		
BVSOL-03	32	125	M10 × 50	φ8 × 40
BVSOL-04		160		
BVSOL-05		200		
BVSOL-06	55	100	M12 × 80	φ10 × 60
BVSOL-07		160		
BVSOL-11		160		
BVSOL-12	70	200	M16 × 100	φ12 × 70
BVSOL-13		250		
BVSOL-15		400		
BVSOL-16		160		
BVSOL-17	85	200	M20 × 120	φ16 × 70
BVSOL-18		250		
BVSOL-20		400		



Example

