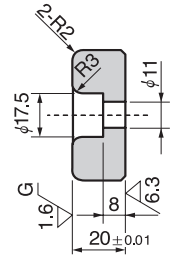
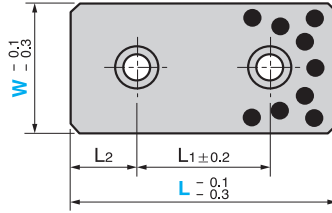


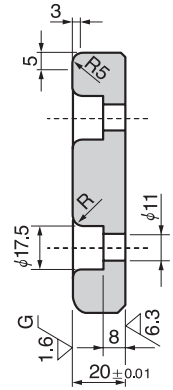
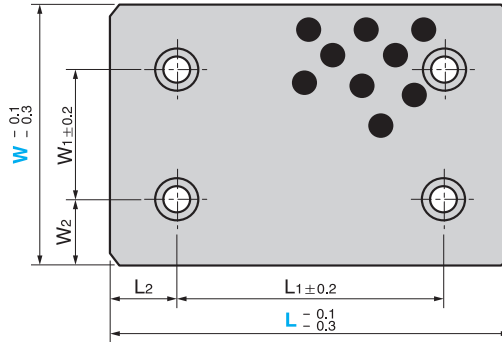
**BESW** (Bronze Standard Type)



● W = 28 to 75



● W = 100 or more



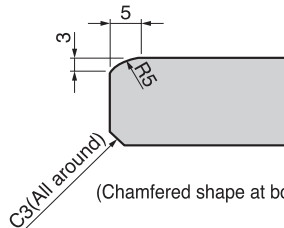
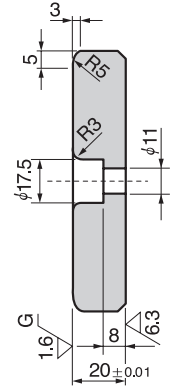
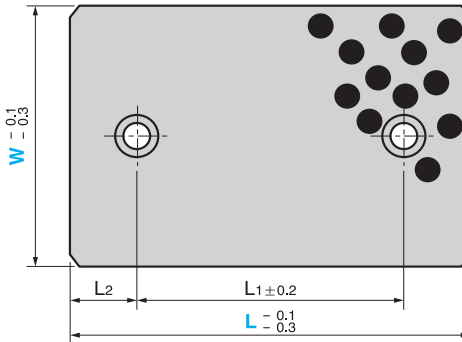
**BESWT**  
(Bronze 2-Hole Type)



● Sliding Direction  
W = 28 and 38



W = 48 or more



(Chamfered shape at both ends)

Material : Bronze with Graphite  
(CAC304+GR)

W <sub>1</sub>	W <sub>2</sub>	L <sub>1</sub>	L <sub>2</sub>	Catalog No.	W	L	
						BESW	BESWT
		45	15			75	
		50	25		28	100	
		100				150	
		45	15			75	
		50	25		38	100	
		100				150	
		45	15			75	
		50				100	
		75	25		48	125	
-	-	100		BESW		150	-
		150				200	
		45	15			75	
		50			58	100	
		100				150	
		25				75	
		50				100	
		75			75	125	
		100	25			150	
		150				200	
		50				100	100
		75				125	125
	25	100			100	150	150
		150				200	200
		200	50			250	250
50		75				300	300
		100	25	BESW		125	125
		150		BESWT	125	150	150
	37.5					200	200
						250	250
		200	50			300	300
			75			350	350
		100				150	150
100	25	150	25		150	200	200
		200				250	250

\* W<sub>1</sub> and W<sub>2</sub> are the dimensions only for BESF (W = 100 or more).



Order

<b>Catalog No.</b>	<b>W</b>	-	<b>L</b>
BESW	38	-	100
BESWT	100	-	150

■ We are ready to accept requests or orders for special parts.