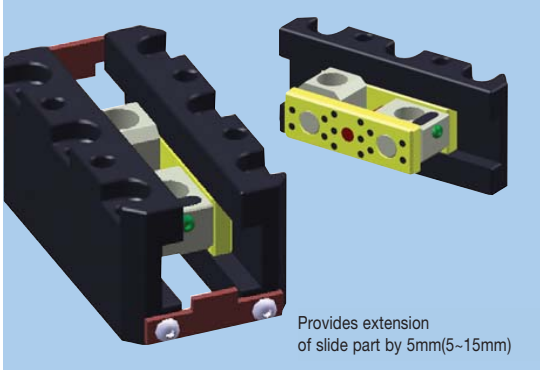




BBSN

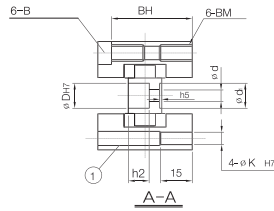
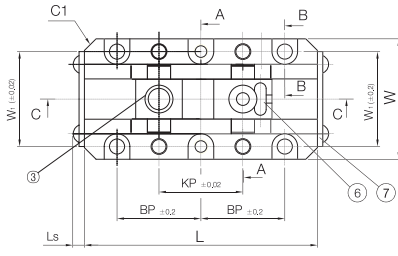


Provides extension of slide part by 5mm(5~15mm)

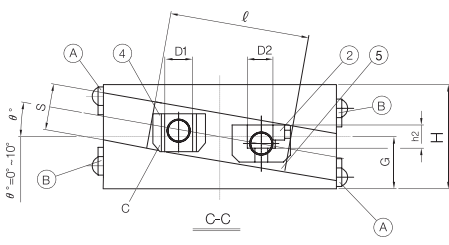
■ Universal Core Unit - Core Unit Set (Controllable Type)

- This slide unit leads the angular pin to slide in smooth way when core moves inclined injection including any undercut.
- This slide unit adjusts by itself center, therefore it prevents wear and stick of the guide and the slide plate.

No.	Description	Q'ty	Material
1	Slide Block	2	SCM440
2	Core Shaft Block	1	SCM440
3	Bushing	1	DU
4	Guide Plate	2	#500SP(CAC304+Gr)
5	Key	1	S45C
6	Stopper Plate	2	SS41



Order
 Catalog Code (∅D)×ℓ SKD 61
 BBSN - 25 - 5
 BBSN - 25 - 5 - D



Shape for ∅ D dimension 6 to 10,

*Take off 6 Stopper Plate when assemble on injection tool,

∅ D	C1	Ls	Ⓐ	Ⓑ	Over10° (θ)
6	3	4.8	0°~10°	0°	H+10
8	3	4.8	0°~10°	-	
10	4	4.8	0°~10°	-	
12	5	4.8	0°~10°	-	Quotation by drawing
16	6	4.8	0°~10°	-	
20	6	4.8	0°~10°	-	
25	6	4.8	0°~10°	-	

※Over10.1° (θ) Quotation by drawing

∅ D	D1	D2	W	L	H	W1	BP	KP	G	h2	h5	ℓ	S	B	BM	BH	∅ K	∅ d	∅ d1
6	6	5	36	72	34	27	26	26	17	3.5	-	47	14	M4	M5	285	4	4	-
8	6	6.5	38	77	34	28	28	28	17	3.5	-	47	14	M4	M5	285	4	4.5	-
10	8	8	42	88	38	32	32	32	19	5	-	53	16	M4	M5	325	4	5.5	-
12	10	11	52	100	45	41	41	36	22.5	10	-	60	20	M6	M8	385	6	5.5	-
16	12	15	56	115	48	46	45	42	24	11	3	70	20	M6	M8	415	6	9	16
20	16	18	64	130	56	52	51	46	28	13	5.5	80	24	M6	M8	495	8	11	20
25	20	22	71	148	62	59	58	54	31	15	5.5	93	26	M6	M8	555	8	11	20