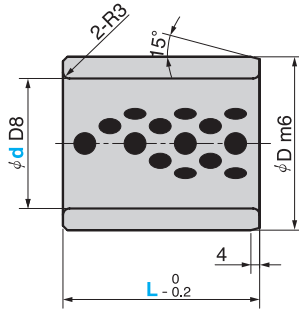
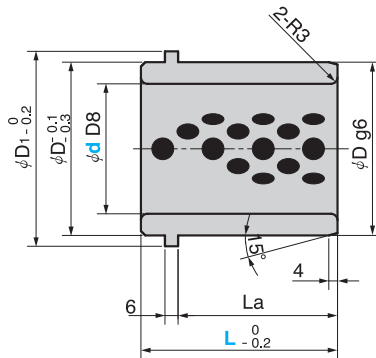




BGBD (Straight Type)



BGBTD (Flange Type)



● Sliding Direction



● Recommended tolerance for drilled hole H7

Material : Bronze with Graphite (CAC304+GR)

■ Tolerance of outer diameter φ D

| D | BGBD | BGBTD | d D8 | D | D1 | La | Catalog No. | d | L |
|-----|--------------|--------------|------|-----|-----|-----|-------------|----|-----|
| | Tolerance m6 | Tolerance g6 | | | | | | | |
| 80 | + 0.030 | - 0.010 | 60 | 80 | 90 | 53 | BGBD | 60 | 70 |
| | + 0.011 | - 0.029 | | | | 73 | | | 90 |
| 100 | + 0.035 | - 0.012 | 80 | 100 | 110 | 80 | BGBTD | 80 | 100 |
| | + 0.013 | - 0.034 | | | | 100 | | | 120 |



Order

Catalog No.

BGBTD

d

60

-

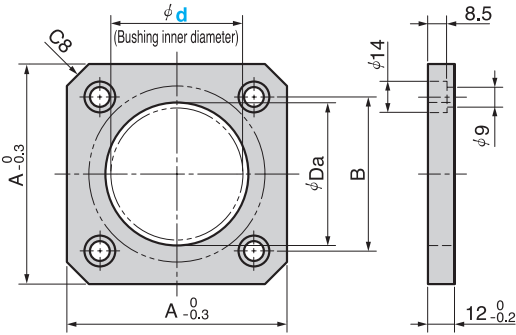
L

90



■ Guide Bushing Loosening Lock Plate (for Straight Type)

BBSP



| A | B | Da | Bushing outer diameter D | Catalog No. | d |
|-----|----|----|--------------------------|-------------|----|
| 90 | 70 | 65 | 80 | BBSP | 60 |
| 110 | 90 | 85 | 100 | | 80 |



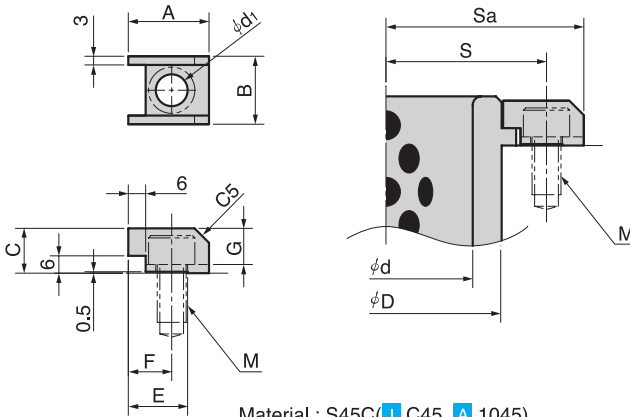
Order

| | |
|-------------|----|
| Catalog No. | d |
| BBSP | 60 |

Material : S45C(I C45 A 1045)
Surface Treatment : Black oxide

■ Guide Bushing Loosening Lock Plate (for Flange Type)

BNG



Material : S45C(I C45 A 1045)

| Guide Bushing | | M | S | Sa |
|---------------|-----|-----|------|------|
| d | D | | | |
| 60 | 80 | M8 | 54 | 65.1 |
| | | M10 | 55.5 | 68.4 |
| 80 | 100 | M8 | 65 | 76.1 |
| | | M10 | 66.5 | 79.4 |

| A | B | d1 | C | E | F | G | M | Catalog No. |
|------|------|----|------|------|------|------|-----|-------------|
| 24.6 | 18.9 | 9 | 13 | 18 | 13.5 | 10 | M8 | BNG72 |
| 27.9 | 23.5 | 11 | 15.5 | 20.5 | 15 | 12.5 | M10 | BNG73 |



Order

Catalog No.

BNG73