

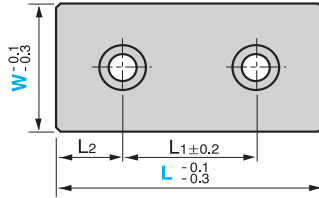


Wear Plate – Sintered Type (Thickness 10mm)

BWX

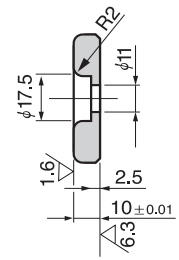
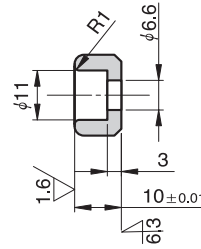


• W = 18 to 75

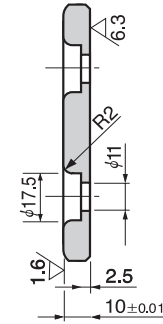
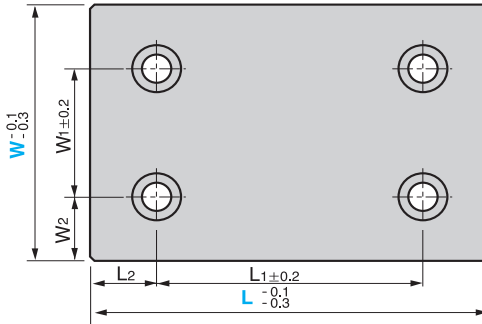


W = 18

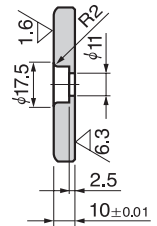
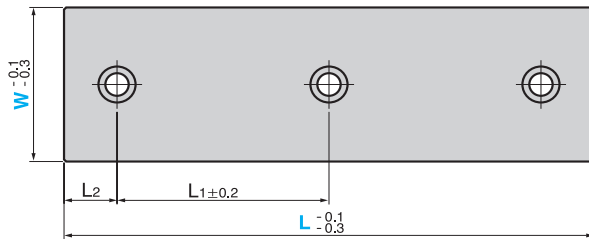
W = 28 to 75



• W = 100 or more



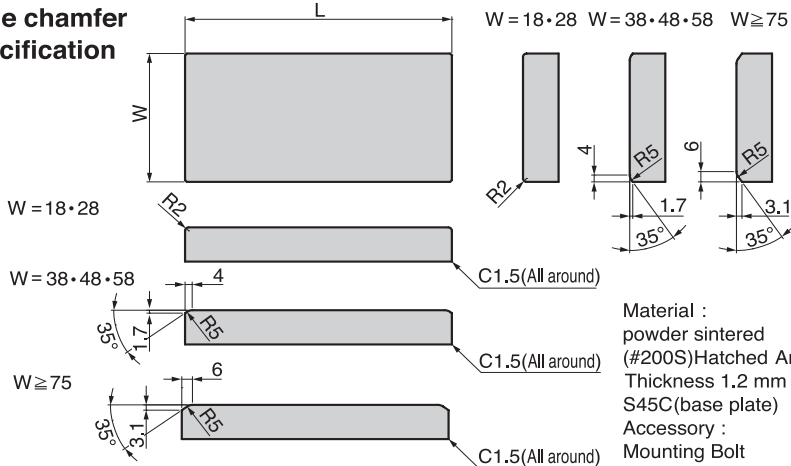
• W = 48, L = 250
W = 75, L = 250 and 300



• Sliding Direction



■ Edge chamfer specification



Material :
powder sintered (#200S)/Hatched Area Sintered
Thickness 1.2 mm or more
S45C (base plate)
Accessory :
Mounting Bolt

BK Wear Plate - Sintered Type (Thickness 10mm)

W1	W2	L1	L2	Catalog No.	W	L
		45	15			75
		50			18	100
		75	25			125
		100				150
		45	15			75
		50			28	100
		75	25			125
		100				150
		45	15			75
		50			38	100
		75	25			125
		100				150
		45	15			75
		50				100
		75	25		48	125
						150
		100	50			200
			25			250
		45	15			75
		50			58	100
		100				150
		25		BWX		75
		50				100
		75	25			125
		100			75	150
		150				200
		100				250
		100	50			300
		50				100
		75				125
50	25	100	25		100	150
		150				200
		200				250
			50			300
75		75				125
		100				150
50	37.5	150	25		125	200
		200				250
			50			300
		100				150
100	25	150	25		150	200
		200				250

*Bolts are not attached to BWX18.



Order

Catalog No.	W	-	L
BWX	48	-	150

■ We are ready to accept requests or orders for special parts.