

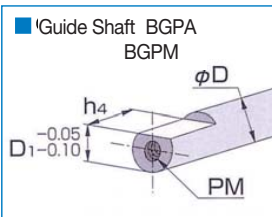
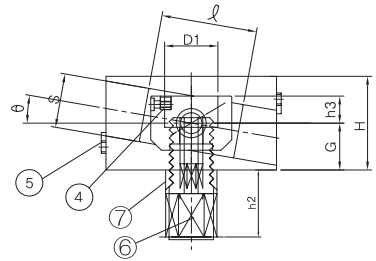
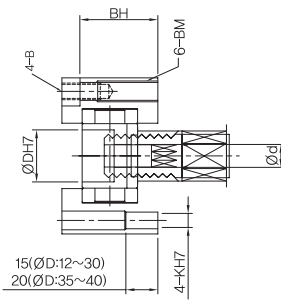
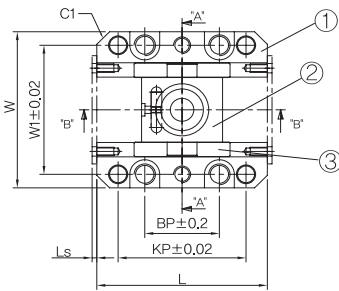
BASL



- Non-lubricant Slide Core Unit - Advantage
 - This slide unit leads the angular pin to slide in smooth way when core moves inclined injection including any undercut.
 - This slide unit adjusts by itself center, therefore it prevent wear and stick of the guide and the slide plate.

* Assembling Manual - page 66~67

No.	Description	Q'ty	Material
1	Slide Block	2	SCM440
2	Core Shaft Block	1	SCM440
3	Guide Plate	2	#500SP(CAC304+Gr)
4	Key	1	S45C
5	Stopper Plate	2	SS41
6	Control Bolt	1	SCM400
7	Fasten Nut	1	SCM400



Catalog No.	φ D	C1	Ls	Ⓐ	Ⓑ	Over10° (θ)
BASL	12	5	4.65	0° ~ 10°	0°	Quotation by drawing
	16	6	4.65	0° ~ 10°	-	
	20	6	4.65	0° ~ 10°	-	
	25	6	4.65	0° ~ 10°	-	H+10
	30	6	4.65	0° ~ 10°	-	
	35	6	5.20	0° ~ 10°	-	
	40	6	5.20	0° ~ 10°	-	

Order → Catalog Code D θ SKD 61

BASL-25 - 0°
BASL-25 - 0° - D

Assembling Tod BCL-25

※Over10.1° (θ) Quotation by drawing

φ D	W	L	H	W1	BP	KP	G	h2	h3	ℓ	S	B	BH	BM	φ K	D1	φ d	PM
12	56	55	35	45	21	42	17.5	20	11.5	35	20	M6	27.5	M8	6	11	5.2	M5
16	60	65	36	48	25	46	18	22	12.5	40	20	M6	28.5	M8	6	15	8.2	M8
20	68	70	43	55	25	50	21.5	25	14.5	40	24	M8	33.5	M10	8	18	10.5	M10
25	75	80	45	62	35	60	22.5	28	16.5	45	26	M8	35.5	M10	8	22	12.5	M12
30	81	95	54	68	50	75	27	30	18.5	55	30	M8	44.5	M10	8	27.5	12.5	M12
35	98	110	60	81	50	85	30	30	21.5	70	34	M10	48.5	M12	10	32.5	16.5	M16
40	105	120	64	88	60	95	32	30	23.5	80	38	M10	52.5	M12	10	37.5	16.5	M16