

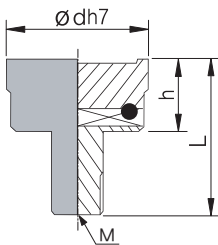


Material: SUS420J2 Hardness: HRC 48-52°

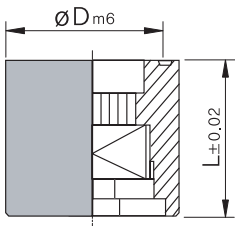
### Characteristics of parting side replacement-type

- \* It is possible to exchange inner core for parting line.
- \* Inner core exchange is possible while the metal molding is settled on the injector.
- \* There is no need of date mark on the several metal moldings that the securing of space in the metal mold is easy.

inside arrow



outside ring



### Method of use

- \* Turn the arrow to the right to use.  
(If the location is wrong, turn to the right side again to use.)
- \* When the inner core is disintegrated, turn to the left continuously while no force is applied to the vertical direction.
- \* The method of loading or unloading to the metal mold is the same with SF (plate replacement-type).

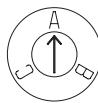
(D)	d	h	M * P
4	2	4.5	M 1.6 * 0.20
5	3		
6	3.7		
8	5	5.5	M 2.3 * 0.25
10	6.3	6.5	M 2.5 * 0.35
12	7.5		M 3.0 * 0.35
16	11	6.7	M 4.0 * 0.35
20	12		

D	Dm6	L
4	+0.012 +0.004	8
5		
6		
8	+0.015 +0.006	10
10		12
12	+0.018 +0.007	14
16		
20	+0.021 +0.008	16

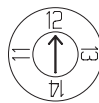
**Parting Line Exchange Type BP**

	<b>BPY-Ø</b>							
	Ø4	Ø5	Ø6	Ø8	Ø10	Ø12	Ø16	Ø20
	<b>BPM-Ø</b>							
	Ø4	Ø5	Ø6	Ø8	Ø10	Ø12	Ø16	Ø20
	<b>BPD-Ø</b>							
	Ø4	Ø5	Ø6	Ø8	Ø10	Ø12	Ø16	Ø20
	<b>BPMM-Ø</b>							
	Ø4	Ø5	Ø6	Ø8	Ø10	Ø12	Ø16	Ø20
	<b>BPDD-Ø</b>							
	Ø8	Ø10	Ø12	Ø16	Ø20			
	<b>BPX-Ø</b>							
	Ø4	Ø5	Ø6	Ø8	Ø10	Ø12	Ø16	Ø20
	<b>BPYM-Ø</b>							
	Ø4	Ø5	Ø6	Ø8	Ø10	Ø12	Ø16	Ø20
<b>BP2P</b>	<b>BP3P</b>	<b>BP4P</b>	<b>BP5P</b>	<b>BP6P</b>				
<b>BP7P</b>	<b>BP8P</b>	<b>BP9P</b>	<b>BP10P</b>	<b>BP12P</b>				
<b>Customizable details (letters, Numbers)</b>								
	Ø4	Ø5	Ø6	Ø8	Ø10	Ø12	Ø16	Ø20

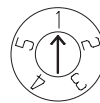
ex)



BP3P



BP4P



BP5P

Order

catalog no. — D

BPY - 10  
BP2P - 6(A,B,C)